

Amazing Larsen

THE CLARIN tournament was won by the amazing Danish Grandmaster Bent Larsen with a three point margin on 11/13 points! Second was a four-way tie between Andersson (Sweden), Miles (England), Najdorf (Argentina) and Spassky (USSR) on 8 points. The following game was the most brilliant of the tournament.

BENONI DEFENCE

B. IVKOV (Yugoslavia)	F. GHEORGHIU (Rumania)
1. d4	Nf6
2. c4	c5
3. d5	g6
4. Nc3	Bg7
5. e4	d6
6. Nf3	0-0
7. h3	e6
8. Bd3	e×d5
9. e×d5	Re8 ch
10. Be3!	

The key to White's play. He intends to meet 10...Bh6 by 11.0-0! — as Gheorghiu played as White against Ulf Andersson in Manila 1975 — and after 11...B×e3 12.f×e3 R×e3 he has 13.Qd2 followed by Qh6 with a dan-

gerous attack. This time, with Black, Gheorghiu decides to break on the Queenside.

10.	b5!
11. N×b5	Ne4
12. 0-0	B×b2

Possibly 12...a6 is better. Now Ivkov begins a combination of exceptional depth.

13. B×e4! R×e4
Giving up the defensive Black-squared bishop with 13... B×a1 14.Q×a1 is just too risky.

14. Qc2 R×e3
15. Q×b2 R×f3
What is White to do? 16. g×f3 is met by 16...B×h3 with threats of 17...Qg5 mating and 17...B×f1, regaining the exchange with a pawn interest.

Ivkov's calm positional reply of putting his rook on the open file is a magnificent rejoinder.

16. Rfe1! Bd7
On 16...Rf5 (or 16...Rf6) White

has 17.Nc7 while 16...Qf6 17.Q×f6 R×f6 18.Re8 ch wins.

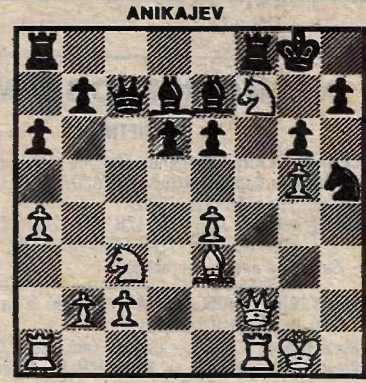
17. g×f3	Qg5 ch
18. Kh1	Na6
19. N×d6	B×h3
20. Rg1	

What a shame — 20.Qh8 ch! K×h8 21.N×f7 ch regaining the Queen would have been a lovely finish. However Ivkov's efficient mopping up operation leaves the matter in little doubt anyway, despite White's exposed kingside.

20. ...	Qf4
21. Rg3	Q×d6
22. R×h3	Re8
23. Kg2	h5
24. Qc3	Nc7
25. Re1	Rd8
26. Rh4	Ne8
27. Rhe4	Qb8
28. Re7	Nd6
29. Qf6	Rf8
30. Qf4	Rd8
31. R1e6!	f×e6
32. Qf6	Resigns

Yefim Geller won the 47th USSR Championship shortly before Christmas — for the first time since 1955. He drew his first seven games, but scored six points from the following seven, finishing undefeated on 11½/18 ahead of Yusupov 10½, Kasparov and Balashov 10.

The following combination from the event shows he can be as aggressive as ever.



Geller to move continued:

22. Nd5	e×d5
23. Nh6 ch	Kg7
24. Qf7 ch!	R×f7
25. R×f7 ch	Kh8
26. Bd4 ch	

Here we see the point of Geller's 22nd move — the e-pawn has been deflected, and can no longer block this fatal check. Now checkmate is forced.

26. ...	Bf6
27. R×f6	Resigns

White mates after 6...Ng7 7.Rf7 Rg8 8.B×g7 ch R×g7 9.Rf8 ch.

MURRAY CHANDLER